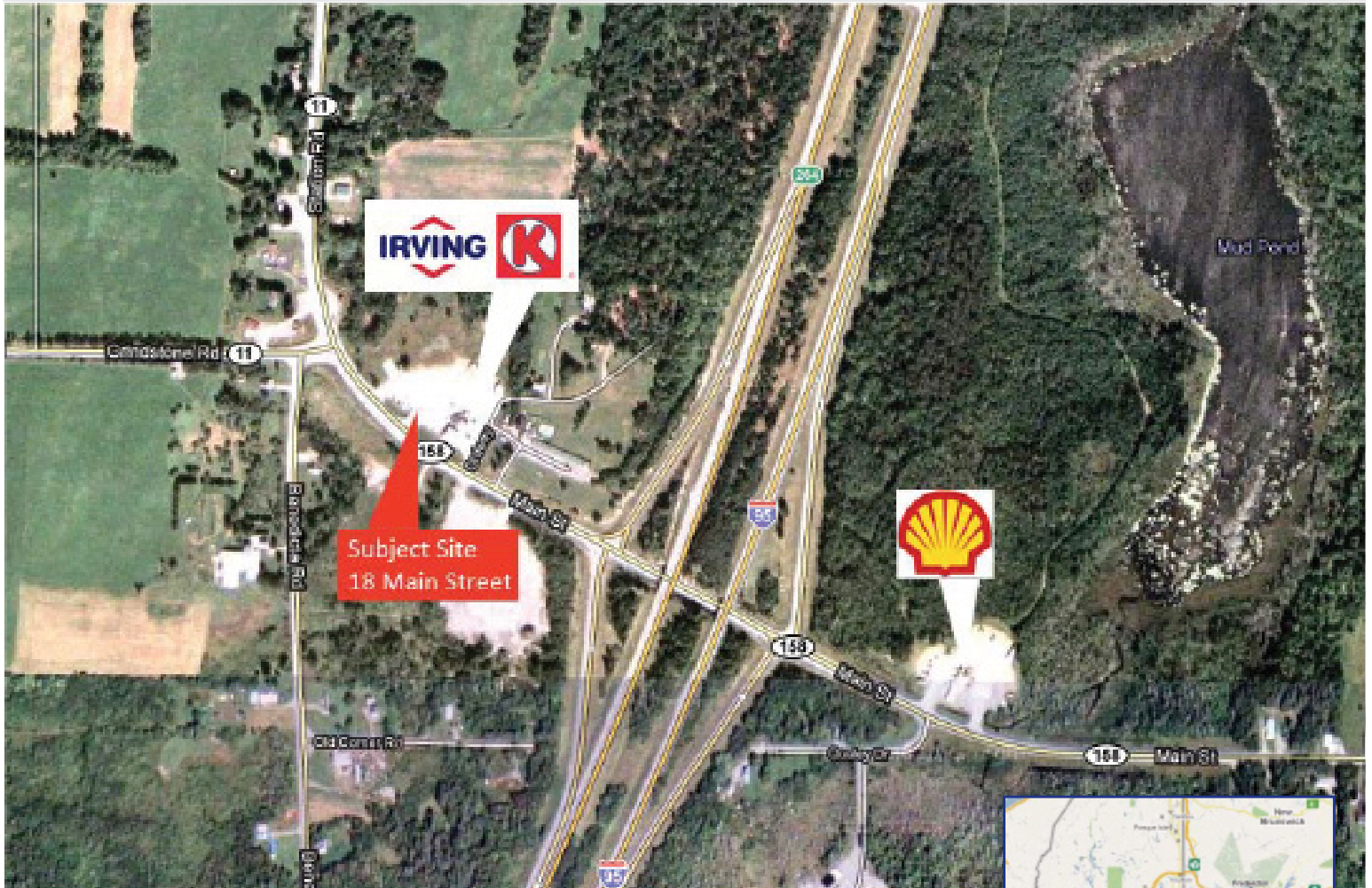


Sherman Mills, Maine

18 Main Street



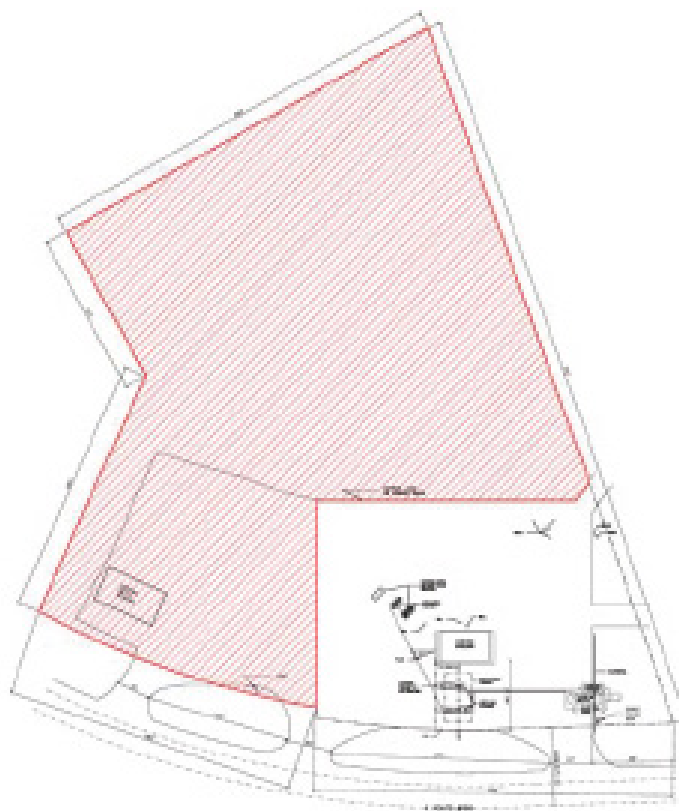
Property Highlights

- Vacant land adjacent to Irving/Circle K
- Great property location off I-95
- 40 minutes from Houlton
- 1 hr 20 minutes from Bangor
- Austin College nearby
- Close to Baxter State Park
- Excellent opportunity for quick service restaurant



Sherman Mills, Maine

18 Main Street



Project Details

Site Area: 4.38 acres

Tenants of our properties include:

BMO, Subway, McDonald's, Tim Hortons, Canadian Tire, Dunkin' Donuts, Carquest, Dairy Queen, Circle K, A&W, Quizno's, Rogers, NL Liquor Corporation, Coast Tire & Auto, Thrifty Car Rental, Canada Post, Couche-Tard, Hogan Tire, CAT Scale, TD Bank, Harvey's, Pharmasave, Sleep Country, Pita Pit

Irving Oil is a privately owned regional refining and marketing company with a history of long-term partnerships and relationships. Our company offers significant holdings in Quebec, Atlantic Canada, and New England. With a portfolio that consists of prime real estate locations off major exits, our properties are ideal for fast food and quick service industries.

Marc Gosselin
506.202.2209
marc.gosselin@irvingoil.com

Susan Baxter
506.-202.7245
susan.baxter@irvingoil.com

