

Oakfield, Maine

236 Oakfield Smyrna Road



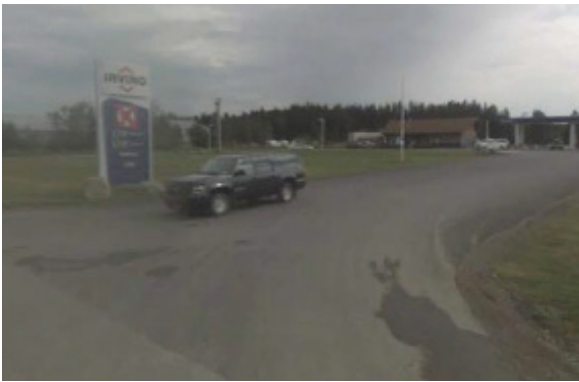
Property Highlights

- Vacant land adjacent to Irving/Circle K
- At I-95 Highway Interchange (exit 286)
- 250 metres from highway ramp
- 30 minutes south of Houlton
- 1 1/2 hrs. to Bangor
- Great location for a fast food, quick serve restaurant
- 30 km to Canada / USA border



Oakfield, Maine

236 Oakfield Smyrna Road



Project Details

Site Area: 31,100 sq. ft.

Tenants of our properties include:

BMO, Subway, McDonald's, Tim Hortons, Canadian Tire, Dunkin' Donuts, Carquest, Dairy Queen, Circle K, A&W, Quizno's, Rogers, NL Liquor Corporation, Coast Tire & Auto, Thrifty Car Rental, Canada Post, Couche-Tard, Hogan Tire, CAT Scale, TD Bank, Harvey's, Pharmasave, Sleep Country, Pita Pit

Irving Oil is a privately owned regional refining and marketing company with a history of long-term partnerships and relationships. Our company offers significant holdings in Quebec, Atlantic Canada, and New England. With a portfolio that consists of prime real estate locations off major exits, our properties are ideal for fast food and quick service industries.

Marc Gosselin
506.202.2209
marc.gosselin@irvingoil.com

Susan Baxter
506.-202.7245
susan.baxter@irvingoil.com

